



www.apai.net

Asphalt – Iowa’s 21st Century Pavement

Smooth. Recyclable. Quiet. Fast to Construct. Perpetual. We use these terms to describe the best attributes of our asphalt roadways. One term we haven’t used enough – Value. Iowa’s asphalt roadways provide the best value to both the agencies that specify them and the motorists who use them. Iowans have just gone through one of the worst economic downturns in our nation’s history. One thing that has become clear: we must live within our means and get the best long-term value for our limited resources. We can no longer build roadways that have a limited life span, high maintenance costs, and limited residual value at the end of the pavement life. We need to build perpetual, smooth and sustainable roadways. We need to build Asphalt roads.



Achieving Best Value

It is well known that the price of asphalt pavement construction has risen allowing its largest competitor, concrete, to be more cost competitive. **Cost is part of the value equation, but it is not singular.**

Initial cost + motorist delay + smoothness + safety + sustainability + maintenance costs + rehabilitation costs + end of pavement life value = True Value of a 21st Century Pavement.

In the 21st Century, pavement performance characteristics will play a large role. Already we are seeing material selection models that incorporate performance characteristics beyond just cost. Triple Bottom Line (TBL) comes to mind. In such a process societal and sustainability factors are part of the “equation”. Life Cycle Assessment (LCA) is another discussion taking place. In an LCA, estimation of greenhouse gas (GHG) emissions from pavement construction and a facility’s use are playing a role in what pavement material will be selected. Asphalt is the clear winner in all of these models. Through fast construction, asphalt roadways provide value and safety to the traveling public by constructing roadways at night, on weekends and during off-peak hours. Asphalt roadways limit GHG emissions by utilizing recycled

(Continued Page 9)



Tales from the Road

“Soccer Dad”

My son Henry started soccer practice last week. I was not excited about it. As a product of SW Iowa and the 1970’s, I never grew up with the sport. My buddies and I played football, basketball and baseball from morning till dark but soccer was not on our radar. That leaves a hole in my skill set as a father. I have been practicing with Henry since he could walk to catch a ball, shoot a ball and throw a ball, but I have apparently woefully neglected teaching him to kick a ball. When confronted with this fact, I went to someone who knew, a neighbor girl, age nine, and a four year veteran of Pee Wee soccer. She showed me and Henry some drills, some techniques and a few strategies that gave us the confidence to practice on our own. I think sometimes in life we just need someone to spend a little time with us and show us the right way to do something. This knowledge gives us confidence to go forward on our own. I believe this is a role that the APAI and its contractors can play in moving the use of asphalt forward in Iowa.

The APAI is staffed with two field engineers, an office manager and myself. Between the four of us, there are well over 130 years of asphalt experience. There is little that we

(Continued Page 2)

Inside This Issue

Upcoming Events	2
This Old Road – Highway 151/13.	3
Iowa DOT Wins 2012 Perpetual Pavement Award.	4
Get Signed Up for APAI Golf Outings.	5
Announcing 5th Annual APAI Summer Meeting.	6
“Asphalt Night” at NACE is a Huge Success.	7
GIAC 2013 A Huge Success	10
Quality Paving Award Winners Recognized at GIAC.	11
APAI Awards Scholarships for 2013-2014	15

Upcoming Events

(Click event for more information)

Eastern Iowa Golf Outing

Date: June 25, 2013
Location: Amana Colonies Golf Club
Middle Amana, IA

To register, click here.

Board of Directors' Meeting

Date: June 27, 2013
Location: APAI Offices
116 Clark Ave., Ste C
Ames, IA

NAPA Mid-year Meeting

Dates: July 15-17, 2013
Location: Boston, MA
For complete information, click here.

APAI Summer Meeting

Date: July 18-19, 2013
Location: Bridge's Bay Resort
Okoboji, IA

Western Iowa Golf Outing

Date: August 28, 2013
Location: Carroll Country Club
Carroll, IA

To register, click here.

Board of Directors' Meeting

Date: September 24, 2013
Location: APAI Offices
116 Clark Ave., Ste C
Ames, IA

Iowa League of Cities

Date: Sept. 25 - 27, 2013
Location: Grand River Center
500 Bell St.
Dubuque, IA

APAI 58th Annual Convention

Date: December 4-5, 2013
Location: West Des Moines Marriott
1250 Jordan Creek Pkwy
West Des Moines, IA

Iowa County Engineers' Conference

Date: December 10-13, 2013
Location: Scheman Center
Iowa State University
Ames, IA



(Tales from the Road – Cont. from Page 1)

haven't seen, tried, failed, or succeeded at. The asphalt contractors of the APAI are regularly recognized as some of the best paving contractors in the nation. This knowledge and experience is readily available to anyone who is willing to ask for help. As I have mentioned in previous columns, asphalt is a mystery to many of Iowa's civil engineers. Lack of education by our institutions of higher learning, lack of hands on experience, and a pervasive old school PCC mentality has limited younger engineers from learning about how to specify, design and build asphalt pavements. We understand that. I was not excited about Henry playing soccer because I didn't know anything about it. I belittled the game. With the small amount of encouragement and training given to us by our neighbor girl, we have become excited about this opportunity to learn a new sport. (Unlike his father, Henry appears to have some coordination and may even become a good player). For those civil engineers out there who are interested in learning more about using asphalt in your projects, give us a call at the APAI (515)-233-0015 or email us at apai@apai.net. Over the last five years, the engineers of the APAI have helped

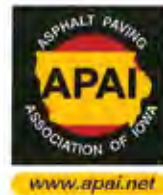
hundreds of Iowa's civil engineers. The new confidence of these design engineers to utilize asphalt on their projects has propelled the increased use of asphalt throughout the State of Iowa. Asphalt opens new opportunities to use green technologies, design perpetual pavements, and build roadways that are quiet, durable, and fast to construct. At the APAI, we are happy to meet with you to answer any questions, give expert advice, provide budget pricing and design plans. We even do office-wide Lunch and Learns. We will give you the expertise and confidence to specify, design and build your own successful asphalt project.

Sometimes we have a hole in our skill set. Through no fault of our own, we missed an opportunity to learn about something important. The key is to ask for help. The APAI and its member companies are ready, willing and able to provide that help. Together we can help you achieve your GOAAAAALLLLLLLLLLL!

Smoother is Better

Bill

Asphalt Paving



Association of Iowa

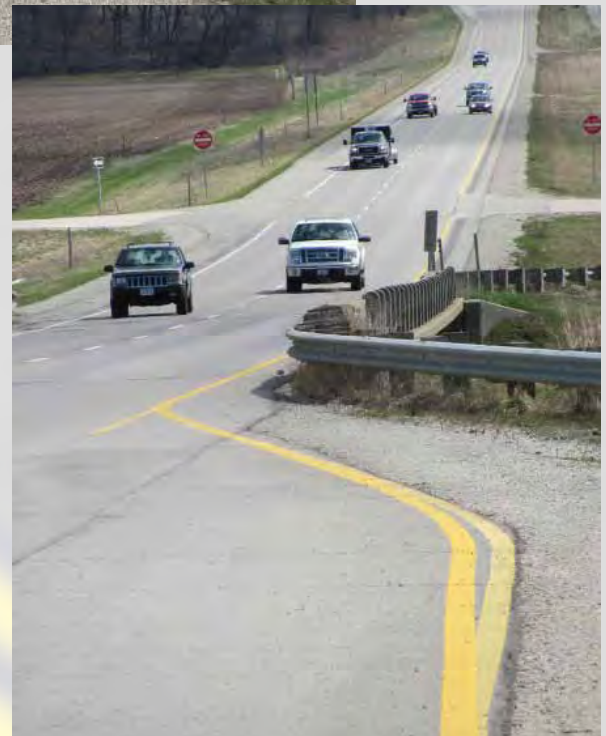
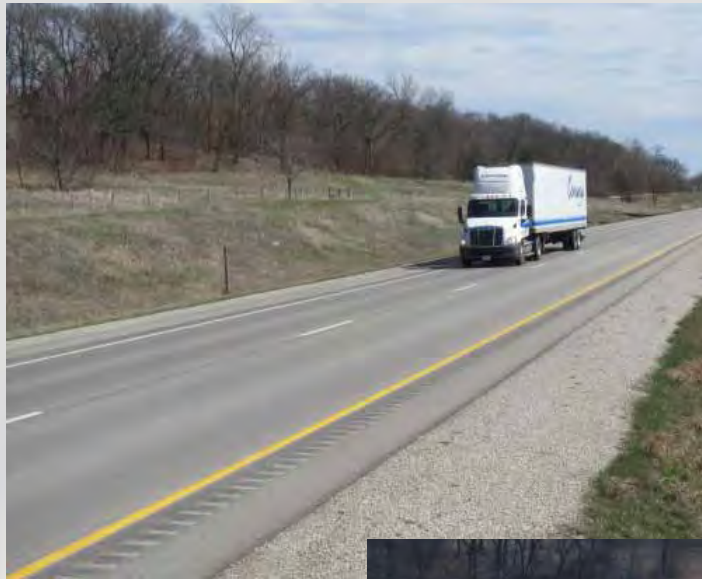
LIKE US ON

facebook®



Highway 151/13

Highway 151 and Highway 13 converge and go north at the Highway 30 interchange along the SE side of Cedar Rapids, IA. This stretch of roadway was originally constructed in 1966 using a 9" asphalt treated base (ATB) with 4.5" hot-mix asphalt (HMA) surface. The roadway carried only 3400 vehicles per day in 1966 and now carries over 16,500 vehicles per day with 12% trucks. During the 47 years of this pavements life cycle, it has been widened and overlaid with 3 inches of HMA at year 25 and milled and overlaid again at year 45. "People talk of long-life PCC pavements, pavements lasting 50 years," said Bill Rosener, Executive Vice President of the Asphalt Paving Association of Iowa. "This asphalt roadway has lasted 47 years and has no end in sight. Highway 151 has adapted to a 500% increase in traffic loading, over 10 million ESALs in heavy load transfer and continues to perform at the highest levels. This Perpetual Pavement is a testament to the quality of Iowa's paving contractors, the quality of the material they produce, and the strong working partnership with the Iowa DOT." This Old Road has discovered that Iowa has over 147 sections of full-depth asphalt roadways within the Iowa DOT highway systems that are a minimum of 35 years old and range to over 80 years old. Kind of makes you think maybe full-depth asphalt might be the right choice for Iowans. Asphalt - Smoother. Faster. Smarter.



Iowa Department of Transportation Wins 2012 Perpetual Pavement Award

The Asphalt Pavement Alliance (APA) has announced that the Iowa Department of Transportation has won a 2012 Perpetual Pavement Award for a 3.5-mile section of the northbound lanes of Highway 151 in Linn County.

To qualify for this prestigious award, a pavement must be at least 35 years old and meet strict criteria. It must demonstrate the characteristics expected from long-life asphalt pavements: excellence in design, quality in construction and value to the traveling public. Engineers at the National Center for Asphalt Technology (NCAT) evaluated the nominations and a panel of industry experts validated the winners.

As a winner of a 2012 Perpetual Pavement Award, Iowa DOT will receive an engraved crystal obelisk and a plaque and its name will be added to a permanent plaque that is kept at NCAT in Auburn, Ala.

The winning pavement extends from MP 30.12 to MP 33.6 northbound. When it was opened in 1966 its average daily traffic count was approximately 3,350 vehicles, with 11 percent trucks. Since that time, traffic usage has increased nearly 500 percent; today it handles 16,500 vehicles with 12 percent trucks. Iowa DOT estimates that the road has withstood approximately 10 million ESALS (equivalent single axle loads) since its construction.

This section of Highway 151 was built

with a soil-aggregate subbase, followed by a nine-inch, asphalt-treated base course and a 4.5-inch asphalt surface course. The roadway was widened and overlaid with three inches of asphalt surface in 1991 as it became a major feeder route in the Cedar Rapids-Iowa City area. Iowa DOT milled 2.5-inches from the road in 2011 and overlaid it with four inches of asphalt mix.

“It takes a combination of factors to make pavements last like this one has,” said Scott Schram, Iowa DOT bituminous engineer. “The contractor who built the road used exceptionally good materials and exceptionally good workmanship, and Iowa DOT has done an excellent job on maintaining it.”

“This award is a tribute to the partnerships in the paving industry in Iowa,” said Greg Mulder, Director of Materials and Construction for Iowa DOT. “I believe that the Iowa Department of Transportation’s staff has worked diligently with the suppliers and contractors to produce the highest quality materials and to use the latest construction techniques to achieve the best performance possible for the pavements in Iowa.”

“One of the keys to sustainability is long life,” said Michael J. Kvach, executive director of the Asphalt Pavement Alliance. “Asphalt roads can be engineered to last indefinitely with only routine maintenance and periodic surface renewal.”

“The advantages of these perpetual pavements are significant. Life cycle costs are lower because deep pavement repairs and reconstruction are avoided. User delays are reduced because minor surface rehabilitation requires shorter work windows and can avoid peak traffic hours. And the environment benefits because minimal rehabilitation, combined with recycling any materials that are removed from the pavement surface, reduces the amount of material resources over the pavement’s life.”

The Asphalt Pavement Alliance is a coalition of the National Asphalt Pavement Association, the Asphalt Institute, and the state asphalt pavement associations. The Asphalt Pavement Alliance’s mission is to further the use and quality of hot mix asphalt pavements. The Alliance will accomplish this through research, technology transfer, engineering, education and innovation.



Get Signed Up for APAI Golf Outings



This year's APAI Golf Outings will be held again at the beautiful Amana Colonies Golf Course in Amana, IA (451 27th Avenue) on



Tuesday, June 25 and at the surprising Carroll Country Club (20069 Olympic Avenue, Carroll) on Wednesday, August 28.



Registration will begin at 7:30 a.m. with a 9:00 a.m. shotgun start for the 4-Man Best-Ball Tournament. Pre-registration for your four-person team is now open. The cost per person golfing is \$75. This cost includes golf, cart, practice balls, and lunch. Everyone is welcome to join us at these events.

There will be contests of skill to help fund the APAI Scholarships again this year, and if you feel the need for an extra edge, Scholarship mulligans will be available.

Last year's events were near sell-outs so don't delay signing up! Spaces will be limited to 36 teams at each venue. You may access the registration page by clicking [here](#).

Golf Outings Offer Sponsorship Opportunities

The APAI golf outings have become the "must-attend" events of the summer and they are the "must-sponsor" events for your company! We are offering four levels of sponsorship opportunities for this year's golf outings: the Bring-a-Ringer sponsorship, Gold, Bronze and Hole sponsorships. All levels of sponsorship will receive signage opportunities, plus the additional incentives described below. Due to last year's popularity, the Bring-a-Ringer sponsorships have been increased to four this year.

Sponsorship levels are listed below:

- "Bring a Ringer" Sponsorships (4 Available)**\$1500
A representative at a hole at each event plus a foursome at one event.
- Gold Sponsorships (2 Available)**.....\$1,000
Includes a foursome at one event plus Beverage Cart Sponsorship
- Bronze Sponsorship**.....\$500
Includes one golf registration at one event plus sign at hole and sponsor recognition
- Hole Sponsorship**\$300 / Both Events
Hole signs and sponsor recognition

To become a sponsor send an e-mail to Minnie Coree at apai@apai.net with your level of sponsorship in the subject line or you may call her at the APAI office at 515-233-0015 with your selection.

ANNOUNCING!

5th Annual APAI Summer Meeting

July 18 - 19, 2013

Okoboji, Ia



Barefoot in 'Boji



This year's event will be held at the Bridges Bay Resort beginning at 5:00 p.m. on Thursday the 18th with a dinner cruise on West Okoboji Lake, followed by a night of revelry at Braccos. Friday morning will feature a 4-person best ball tournament beginning at 9 a.m. at the Emerald Hills Golf Course.

Bridges Bay Resort (<http://www.bridgesbayresort.com/>) features new 1- and 2-bedroom suites and an amazing water park for your children. Rooms are priced at \$159 for a Double Queen Lake View Room or \$230 for a Lake View King Suite for this event and availability is limited. For hotel reservations, call 712-332-2202.

Cost of the event is \$80 and includes the dinner cruise, entertainment, and the after-cruise party at Bracco's. Golf is available at \$75 per person. Child care for the evening event will be available at an hourly rate. More information will be forthcoming.

Come join us for a two-day get away!

Sign up today by clicking here!

Sponsorship levels are available, go to www.apai.net for complete information or call Bill or Minnie at 515-233-0015.



“Asphalt Night” at NACE is a Huge Success

Over 500 National County Engineers Conference attendees got on buses and raced to the Iowa Speedway in Newton, IA for Asphalt Night sponsored by the APAI contractors. County Engineers from all over the country were treated to Iowa hospitality by their fellow Iowa County Engineers and the results were electric. Attendees were treated to great food, rides around the Iowa Speedway, and music from the Fishheads band. Special thanks to all the APAI Contractors who sponsored the event; Larry Mattusch, Royce Fichtner, and Jim George for organizing the event; and Todd Kinney and the ICEA Board of Directors for the opportunity to host Asphalt Night at the Iowa Speedway. Great job by all of you.



IOWA ASPHALT REPORT



PLEASE JOIN THE
APAI  MEMBERS

for

ASPHALT
Night

at the

IOWA SPEEDWAY
TUESDAY, APRIL 23 @ 5:00PM



IOWA ASPHALT REPORT

(The Future of Iowa Asphalt – Cont. from Page 1)

asphalt (RAP), recycled asphalt shingles (RAS), ground tire rubber (GTR) and warm mix asphalt (WMA). Asphalt roadways can be constructed as perpetual asphalt pavements that will never need to

be reconstructed. These roadways can be maintained through periodic mill and fill operations that utilize the RAP generated. This provides value back to Iowa's taxpayers by utilizing the material already paid for

once and reducing the use of Iowa's and the nation's natural resources. When selecting and designing your next roadway, please utilize the roadway performance and value chart below.

Performance Characteristic	Performance Value
Perpetual Performance	Perpetual Performance is descriptive of pavement that has inexhaustible structural life. Iowa's experience shows deep-strength asphalt pavements have not needed major rehabilitation or replacement. The earliest deep-strength asphalt pavements constructed in the early 1960's Interstate System continue to provide exceptional service and "Perpetual" performance. Conversely, concrete pavements on the Interstate System have all been systematically removed and replaced.
Ease of Maintenance	"Ease of Maintenance" implies the characteristic of a pavement to require only low cost maintenance activities that minimize labor and equipment demand on the agency (e.g. preventive maintenance, crack sealing, partial depth patching). Asphalt pavements historically demonstrate this capability best.
MOT (Maintenance of Traffic)	Asphalt pavements facilitate the movement of motorists through roadway construction and maintenance activities by their non-intrusive rehabilitation strategies that permit flexible traffic control and rapid work zone setup and teardown (e.g. mill-and-fill, night paving).
Serviceability	Serviceability is a pavement characteristic developed during the AASHO Road Test that continues to have relevance to this day. Serviceability is a measure of the performance of a pavement in meeting the ride quality demands of the motorist.
Smoothness	Iowa's experience is that asphalt pavement construction provides the highest level of smoothness when compared against all other pavement types, both initially and over the life of the pavement. The Iowa DOT recognizes asphalt's superior ride and smoothness by assigning best smoothness incentives to asphalt at 10"/mile vs 22"/mile for concrete.
Constructability	The term "constructability" infers the advantages afforded by a paving material to facilitate design simplicity, rapid construction, maintenance of traffic, and maximization of safety to motorists and construction workers. Asphalt pavements have been proven to be the most constructible pavement as demonstrated through its preferred use for rehabilitating failing PCC pavements in Iowa.
Speed of Construction	Asphalt pavements are more quickly constructed than concrete pavements since asphalt needs only hours to gain complete strength rather than days of curing, as is the case for concrete. ¹
Noise (Quietness)	Noise has a significant impact on the quality of life and is costly to mitigate. National research shows that asphalt pavements are the most quiet pavement type. When compared to longitudinally tined concrete pavement asphalt still measures quieter. ^{2,3}
100% Reusable	<ul style="list-style-type: none"> Asphalt pavement is 100% reusable, not requiring removal and disposal costs such as that associated with wasting concrete, nor cluttering of interchange infields or risking water quality from such.⁴ The cementing materials used in manufacturing asphalt and concrete mixtures contribute the greatest expense to these products. The ability to capture their use as cementing materials in new pavement constitutes the highest use and best value of a reclaimed material. Only the reuse of reclaimed asphalt into new asphalt mix accomplishes this. Virgin asphalt binder is conserved and the value of this material is captured in substantial cost savings. Concrete can only be reclaimed as an aggregate; a lower use, and as such a lower value.
Sustainability	<ul style="list-style-type: none"> Warm Mix Asphalt (WMA) creates new opportunity to incorporate sustainable highway construction practices thereby encouraging fuel savings, less pollution, and improved workplace conditions.⁵ Recycling of asphalt pavements is a common sustainable construction practice and has been determined to be the largest contributor to the recycling effort in the United States.⁶ Recycled Asphalt Shingles (RAS) as a component of asphalt mixtures facilitates sustainable construction through reuse of shingle aggregate and asphalt binder components. Asphalt pavement costs are constrained by reduced need for virgin materials. Land-filling of shingles is reduced. Crumb rubber derived from scrap tires is successfully being used to enhance asphalt paving mixtures by increasing the usable life of a pavement and creating a beneficial use from an otherwise waste product. Asphalt pavement designed to have "Perpetual" performance ensures inexhaustible structural life and as such conservation of raw materials since reconstruction is unnecessary.

¹ *Review of Construction Techniques for Accelerated Construction and Cost Implications*, by Lee and McCullough, Purdue University, August 2009, Table 10, Pg. 55

² *Colorado DOT Tire/Pavement Noise Study*, Report No. CDOT-DTD-R-2004-5

³ *Effects of Pavement Type on Traffic Noise Levels*, by Herman and Ambroziak, Ohio University, ODOT state job no. 14677(0), March 2000

⁴ *Cleaner Water With Asphalt Pavements*, Asphalt Pavement Alliance

⁵ *Summary Report of 2008 Warm Mix Asphalt Trials*, Powers P.E., Asphalt Materials, Ohio Department of Transportation, November 21, 2008

⁶ *Asphalt Pavement is America's Most Recycled Product*, Asphalt Pavement Alliance

**Special thanks and recognition to Cliff Ulrich and the Flexible Pavements of Ohio for the wholesale lifting from the original article "Ohio's 21st Century Pavements"

GIAC 2013 A Huge Success

With over 550 people in attendance, the 2013 Greater Iowa Asphalt Conference (GIAC) broke last year's attendance records. "This event continues to grow and achieve success far beyond our expectations", said APAI Exec. Vice President, Bill Rosener. "It is a testament to the hard work of the GIAC Committee, the quality work of the APAI contractors, and the desire by local and state agencies to learn more about the advantages to use asphalt in their projects."

The two day conference highlighted the innovations in the Iowa Asphalt Industry in sustainability, quality and versatility.

Outstanding Keynote and Opening speakers, Jon Stetson, Dale Decker, and Coach Dan Gable, set the stage for the remainder of the day. The APAI Smoothness Awards Luncheon drew hundreds of attendees to see crew members and local agencies recognized



for their hard work and "Commitment to Excellence". Breakout sessions offered on Thursday afternoon offered something for everyone with a wide range of topics being presented.

A special thank you to all our speakers, volunteers, presenters and to all of the vendors who presented great prizes during the event's breaks. See you next year!

APAI Awards Scholarships for 2013-2014

Scholarship recipients for the 2013 - 2014 Academic Year were selected by the APAI Scholarship selection team from qualified applicants at the three Iowa Regent Universities and the Des Moines Area Community College. Scholarships totaling \$27,050 were given to twenty-six students. The awarded scholarship, the recipients, and their universities are shown below.

Iowa State University Scholarships & Recipients:

RONALD D. KENYON SCHOLARSHIP
Scholar in Civil & Construction Engineering
Jacob Becker, West Des Moines, IA Brandon Horbach, Toledo, IA
Andrew Reynolds, Cedar Rapids, IA

FRED CARLSON COMPANY SCHOLARSHIP
Matt Erickson, Thor, IA Jacob Weiss, Jefferson, IA

ROBERT & SHERI HORNER SCHOLARSHIP
Undergraduate Scholarship
Ken Collis, Osco, IL Nicholas Clobes, Hutchinson, MN

TOM MANATT MEMORIAL SCHOLARSHIP
David Phillips, Prole, IA

HAROLD & MERCEDES CESSFORD MEMORIAL SCHOLARSHIP
Jacob Mawe, Grinnell, IA Molly Schmerbach, Dubuque, IA

ASPHALT PAVING ASSOCIATION OF IOWA SCHOLARSHIP
Brandyn Chezick, Rochester, MN Michael Mahon, Belvidere, IL
Joel Robinson, Altoona, IA Paul Sauter, Wiggins, CO

University of Iowa Scholarships & Recipients:

TOM HENNINGSSEN MEMORIAL SCHOLARSHIP
Clinton Van Winkle, Iowa City, IA

ASPHALT PAVING ASSOCIATION OF IOWA SCHOLARSHIP
Taha Ahmed, Assiut, Egypt Greg Annis, Vinton, IA
Caleb Simon, Mason City, IA

University of Northern Iowa Scholarship Recipients:
ASPHALT PAVING ASSOCIATION OF IOWA SCHOLARSHIP
Andrew Assman, Denison, IA Dylan Alitz, Mason City, IA
Michael Martin, Hartford, IA Jordan Noteboom, Grudy Center, IA
Josh Patience, Earlham, IA

Des Moines Area Community College Scholarship Recipients:
ASPHALT PAVING ASSOCIATION OF IOWA SCHOLARSHIP
Steve Brooks, Boone, IA Tanya Burns, Boone, IA
Hunter Watkins, Boone, IA

Please join in congratulating and encouraging these young scholars in their academic endeavors.

Quality Paving Award Winners Recognized at GIAC

At the 2013 Greater Iowa Asphalt Conference (GIAC) Awards Luncheon held at the Airport Holiday Inn in Des Moines on Thursday, March 7, 2013, awards were presented to those who had been involved with the projects that were deemed the “Best-of-the-best” asphalt paving projects in Iowa. APAI contractors, IDOT, County, City and Consulting Engineers were recognized for their part in constructing Iowa’s best projects.

2012 QUALITY PAVING AWARD WINNERS

Parking Lot / General Commercial Paving

ROCKWELL COLLINS LOT #105,
CEDAR RAPIDS, IA

L. L. Pelling Company, Inc.
North Liberty, IA

Rockwell Collins
Cedar Rapids, IA



2012 57th Annual Convention



Greg Kinser, APAI Vice President;
Joel Gryp, L.L. Pelling Company,
Inc.; John Adam, Director-Highway
Division, Iowa DOT

2013 Greater Iowa Asphalt Conference



Greg Kinser, APAI President; Seth Finnegan,
L.L. Pelling Company, Inc.; Wayne Wood,
L.L. Pelling Company, Inc.; Kelly White, L.L.
Pelling Company, Inc.; Greg Mulder, Office of
Contracts, Iowa DOT

Parking Lot/Heavy Industrial Paving

NATIONAL CENTER FOR ANIMAL HEALTH –
SITE ENTRANCE CONSTRUCTION
PACKAGE, AMES, IA

Manatts, Inc.
Ames, IA

U.S. Department of Agriculture
Ames, IA

Fox Engineering Associates, Inc.
Ames, IA



2012 57th Annual Convention



Greg Kinser, APAI Vice President;
Craig Kalinay, Manatts, Inc.; Dennis
Jones, USDA; John Adam, Director-
Highway Division, Iowa DOT

2013 Greater Iowa Asphalt Conference



Greg Kinser, APAI President; Robert McCrady,
Manatts, Inc.; Matt Skyberg, Manatts, Inc.;
Craig Kalinay, Manatts, Inc; Greg Mulder, Office
of Contracts, Iowa DOT

Trails & Paths Paving

PINICON RIDGE TRAIL, LINN COUNTY, IA

L.L. Pelling Company, Inc.
North Liberty, IA

Linn County Conservation
Marion, IA



2012 57th Annual Convention



Greg Kinser, APAI Vice President;
Joel Gryp, L.L. Pelling Company,
Inc.; John Adam, Director-Highway
Division, Iowa DOT

2013 Greater Iowa Asphalt Conference



Greg Kinser, APAI President; Mark Flitsch,
L.L. Pelling Company, Inc.; Wayne Wood, L.L.
Pelling Company, Inc.; Greg Mulder, Office of
Contracts, Iowa DOT

IOWA ASPHALT REPORT

Special Paving Application

11040: ST. AMBROSE UNIVERSITY POROUS ASPHALT PARKING LOT, DAVENPORT, IA

McCarthy Improvement Co.
Davenport, IA

St. Ambrose University
Davenport, IA

Missman Engineering
Bettendorf, IA



2012 57th Annual Convention



Greg Kinser, APAI Vice President; McCarthy Improvement Co; Ryan Inskeep, McCarthy Improvement Co.; Jason Newman, McCarthy Improvement Co.; Jim Hannon, St. Ambrose University; John Adam, Director-Highway Division, Iowa DOT

Athletic Use Paving

WEBSTER CITY COMMUNITY SCHOOLS NEW TENNIS COURTS CONSTRUCTION, WEBSTER CITY, IA

Fort Dodge Asphalt Co.
Fort Dodge, IA

Webster City Community Schools
Webster City, IA

Midwest Tennis & Track
Denison, IA



2012 57th Annual Convention



Greg Kinser, APAI Vice President; Corey Curnyn, Midwest Tennis & Track; Paul Lauderdale, Midwest Tennis & Track; Greg Estlund, Fort Dodge Asphalt Co.; John Adam, Director-Highway Division, Iowa DOT

2013 Greater Iowa Asphalt Conference



Greg Kinser, APAI President; Tommy Jondle, Fort Dodge Asphalt; Levi Porter, Fort Dodge Asphalt; Rusty Jondle, Fort Dodge Asphalt; Greg Mulder, Office of Contracts, Iowa DOT

2012 SMOOTHNESS AWARD WINNERS

Airport Runway Resurfacing

AIP #03-19-0035-26/27: FORT DODGE REGIONAL AIRPORT, FORT DODGE, IA

Fort Dodge Asphalt Co.
Fort Dodge, IA

Fort Dodge Regional Airport
Fort Dodge, IA

McClure Engineering Co.
Fort Dodge, IA



2012 57th Annual Convention



Greg Kinser, APAI Vice President; Rhonda Chambers, Fort Dodge Regional Airport; Mike Moore, Fort Dodge Asphalt Co.; John Adam, Director-Highway Division, Iowa DOT

2013 Greater Iowa Asphalt Conference



Greg Kinser, APAI President; Dave Schiefelbein, McClure Engineering Co.; Johnny Pederson, Fort Dodge Asphalt; Bruce Marsh, McClure Engineering Co.; Dan Stanberg, Fort Dodge Asphalt; Rusty Jondle, Fort Dodge Asphalt; Greg Mulder, Office of Contracts, Iowa DOT

Municipal Street Resurfacing

301286-02: 3RD AVENUE SE, CEDAR RAPIDS, IA

L.L. Pelling Company, Inc.
North Liberty, IA

City of Cedar Rapids

Anderson-Bogert Engineers & Surveyors, Inc.
Cedar Rapids, IA



2012 57th Annual Convention



Greg Kinser, APAI Vice President; Joel Gryp, L.L. Pelling Company, Inc.; John Adam, Director-Highway Division, Iowa DOT

2013 Greater Iowa Asphalt Conference



Greg Kinser, APAI President; Gary Netser, L.L. Pelling Company, Inc.; Wayne Wood, L.L. Pelling Company, Inc.; Greg Mulder, Office of Contracts, Iowa DOT

IOWA ASPHALT REPORT

Municipal Street Paving

NAP CO. PROJECT 3520:
4TH AVENUE EAST, ALBIA, IA

Norris Asphalt Paving Co.
Ottumwa, IA

City of Albia



2012 57th Annual Convention



Greg Kinser, APAI Vice President; Randy Garrett, Norris Asphalt Paving Co.; Sanford Weaver, Norris Asphalt Paving Co.; John Adam, Director-Highway Division, Iowa DOT

2013 Greater Iowa Asphalt Conference



Greg Kinser, APAI President; Randy Garrett, Norris Asphalt Paving Co.; T.J. Blain, Norris Asphalt Paving Co.; Sanford Weaver, Norris Asphalt Paving Co.; Greg Mulder, Office of Contracts, Iowa DOT

Secondary Resurfacing

LFM-503--7X-07, CEDAR WAPSI RD (C-57),
FINCHFORD ROAD, MARQUIS ROAD,
BLACK HAWK COUNTY, IA

Aspro, Inc.
Waterloo, IA

Black Hawk County Engineering Office
Waterloo, IA



2012 57th Annual Convention



Greg Kinser, APAI Vice President; Milt Dakovich, Aspro, Inc.; Cathy Nicholas, Black Hawk County Engineer; John Adam, Director-Highway Division, Iowa DOT

2013 Greater Iowa Asphalt Conference



Greg Kinser, APAI President; Mike Kindschi, Black Hawk Co.; Chad Wurzer, Black Hawk Co.; Curt Tallman, Aspro, Inc.; Al Youngblut, Aspro, Inc.; Ryan Hennings, Aspro, Inc.; Greg Mulder, Office of Contracts, Iowa DOT

Secondary Paving

LFM-S27HMA--7X-42, S-27,
HARDIN COUNTY, IA

Mathy Construction Co.
Onalaska, WI

Hardin County Engineering Office
Eldora, IA



2012 57th Annual Convention



Greg Kinser, APAI Vice President; Andy Marinelli, Mathy Construction Co.; John Adam, Director-Highway Division, Iowa DOT

2013 Greater Iowa Asphalt Conference



Greg Kinser, APAI President; Joe Webster, Mathy Construction Co.; Greg Mulder, Office of Contracts, Iowa DOT

2012 QUALITY MANAGEMENT ASPHALT (QMA) AWARD WINNERS

Primary Resurfacing – 2-Lane - Rural

STP-146-1(6)--2C-62, IOWA HWY 146,
MAHASKA / POWESHIEK COUNTIES, IA

Manatts, Inc.
Newton, IA

District 1 Office, Ames, IA
Resident Construction Engineering Office,
Marshalltown, IA



2012 57th Annual Convention



Greg Kinser, APAI Vice President; Jeff Steinkamp, Manatts, Inc.; Doug McDonald, Iowa DOT, District 1-RCE; John Adam, Director-Highway Division, Iowa DOT

2013 Greater Iowa Asphalt Conference



Greg Kinser, APAI President; Jeremy Purvis, Iowa DOT, Marshalltown RCE; Steven Kennedy, Iowa DOT Dist. 1; Steve Armstrong, Manatts, Inc.; Ryan Greenley, Iowa DOT Dist. 1; Dennis Pfantz, Manatts, Inc.; Curt Chambers, Manatts, Inc.; Greg Mulder, Office of Contracts, Iowa DOT

Primary Resurfacing – 4-Lane - Rural

NHSX-30-9(129)--3H-23, US HWY 30,
CLINTON COUNTY, IA

Mathy Construction Co.
Onalaska, WI

Iowa Department of Transportation
District 6 Office, Cedar Rapids, IA
Resident Construction Engineering Office,
Davenport, IA



2012 57th Annual Convention



Greg Kinser, APAI Vice President;
Steve Smithson, Iowa DOT, District
6, RCE; David Lange, Mathy
Construction Co.; John Adam,
Director-Highway Division, Iowa
DOT

2013 Greater Iowa Asphalt Conference



Greg Kinser, APAI President; Steve Smithson,
Iowa DOT, Davenport RCE; Andy Marinelli,
Mathy Construction Co.; Greg Mulder, Office of
Contracts, Iowa DOT

Primary Resurfacing – 2-Lane - Urban

STP-122-1(13)--2C-17, IOWA HWY 122,
CERRO GORDO COUNTY, IA

Heartland Asphalt, Inc.
Mason City, IA

Iowa Department of Transportation
District 2 Office, Mason City, IA
Resident Construction Engineering Office,
Britt, IA



2012 57th Annual Convention



Greg Kinser, APAI Vice President;
Ed Simon, Heartland Asphalt, Inc.;
John Adam, Director-Highway
Division, Iowa DOT

2013 Greater Iowa Asphalt Conference



Greg Kinser, APAI President; Jon Klevens, Iowa
DOT, District 2; Jason Baker, Heartland Asphalt,
Inc.; Jim Ward, Heartland Asphalt, Inc.; Jason
Ruter, Iowa DOT, Britt RCE; Greg Mulder,
Office of Contracts, Iowa DOT

Primary Resurfacing – 4-Lane - Urban

NHSN-028-2(43)--2R-77, IOWA HWY 28,
POLK COUNTY, IA

Grimes Asphalt & Paving Corp.
Des Moines, IA

Iowa Department of Transportation
District 1 Office, Ames, IA
Resident Construction Engineering Office,
Des Moines, IA



2012 57th Annual Convention



Greg Kinser, APAI Vice President;
Ray Svoboda, Grimes Asphalt &
Paving Corp.; Dan Ziemann, Iowa
DOT, District 1 RCE; Matt Yonker,
Grimes Asphalt & Paving Corp.;
John Adam, Director-Highway
Division, Iowa DOT

2013 Greater Iowa Asphalt Conference



Greg Kinser, APAI President; Steve Kennedy,
Iowa DOT, District 1; Ryan Greenley, Iowa DOT,
District 1; Danny Zeiman, Iowa DOT, Des
Moines RCE; Rex Kinkade, Iowa DOT, District
1; Huse Kekic, Grimes Asphalt & Paving Corp.;
Edin Beganovic, Grimes Asphalt & Paving Corp.;
Eddie Hilson, Grimes Asphalt & Paving Corp.;
Greg Mulder, Office of Contracts, Iowa DOT

Primary Paving

STP-69-5(95)--2C-85, US HWY 69,
STORY COUNTY, IA

Manatts, Inc.
Ames, IA

Iowa Department of Transportation
District 1 Office, Ames, IA
Resident Construction Engineering Office,
Jefferson, IA



2012 57th Annual Convention



Greg Kinser, APAI Vice President;
John Hart, Iowa DOT, District 1;
Steve Rooney, Manatts, Inc.; John
Adam, Director-Highway Division,
Iowa DOT

2013 Greater Iowa Asphalt Conference



Greg Kinser, APAI President; Rex Kinkade, Iowa
DOT, District 1; Steve Kennedy, Iowa DOT,
District 1; Ryan Greenley, Iowa DOT, District
1; Dirk Zaiser, Iowa DOT, Jefferson RCE; Tim
Peterson, Manatts, Inc.; Dennis Ward, Iowa
DOT, Jefferson RCE; Corey Miller, Manatts,
Inc.; Craig Kalinary, Manatts, Inc.; Greg Mulder,
Office of Contracts, Iowa DOT

IOWA ASPHALT REPORT

Interstate Resurfacing

IMX-035-7(69)194--02-17, I-35,
CERRO GORDO COUNTY, IA

Heartland Asphalt, Inc.
Mason City, IA

Iowa Department of Transportation
District 2 Office, Mason City, IA
Resident Construction Engineering Office,
Mason City, IA



2012 57th Annual Convention



Greg Kinser, APAI Vice President;
Ed Simon, Heartland Asphalt, Inc.;
John Adam, Director-Highway
Division, Iowa DOT

2013 Greater Iowa Asphalt Conference



Greg Kinser, APAI President; Jon Kleven,
Iowa DOT, District 2; Isaac Vazquez, Heartland
Asphalt, Inc.; Mike Caspersen, Heartland
Asphalt, Inc.; Gene Pavelka, Iowa DOT, Britt
RCE; Greg Mulder, Office of Contracts, Iowa
DOT

COMMUNITY INVOLVEMENT AWARD 2012

ALS Fund Raising Efforts

Manatts, Inc.
Brooklyn, IA



2012 57th Annual Convention



Greg Kinser, APAI Vice President;
Bob Morton, Manatts, Inc.; John
Adam, Director-Highway Division,
Iowa DOT

INNOVATION IN CONSTRUCTION ASPHALT PAVING AWARD

IMX-035-7(69)194--02-17, I-35,
CERRO GORDO COUNTY, IA

Heartland Asphalt, Inc.
Mason City, IA

Iowa Department of Transportation
District 2 Office, Mason City, IA
Resident Construction Engineering Office,
Mason City, IA



2012 57th Annual Convention



Greg Kinser, APAI Vice President;
Ed Simon, Heartland Asphalt, Inc.;
John Adam, Director-Highway
Division, Iowa DOT

2013 Greater Iowa Asphalt Conference



Greg Kinser, APAI President; Gene Pavelka,
Iowa DOT, Britt RCE; Jon Kleven, Iowa DOT
District 2; Al Forde, Heartland Asphalt, Inc.;
Richard Millard, Heartland Asphalt, Inc.; Greg
Mulder, Office of Contracts, Iowa DOT

ENVIRONMENTAL INNOVATION IN ASPHALT CONSTRUCTION AWARD

WEST 19TH STREET, SIOUX CITY,
WOODBURY COUNTY, IA

Barkley Asphalt
Sioux City, IA

Jebro, Inc.
Sioux City, IA

City of Sioux City



2012 57th Annual Convention



Greg Kinser, APAI Vice President;
Mike Spohr, Jebro, Inc.; Matt
Barkley, Barkley Asphalt; John
Adam, Director-Highway Division,
Iowa DOT.

2013 Greater Iowa Asphalt Conference



Greg Kinser, APAI President; Jack Barkley,
Barkley Asphalt; Greg Johnson, Jebro, Inc.;
Dale Becker, Barkley Asphalt; Matt Lacek,
Barkley Asphalt; Greg Mulder, Office of
Contracts, Iowa DOT

APAI Members

CONTRACTOR MEMBERS

Aspro, Inc., Waterloo
Barkley Asphalt, Sioux City
Blacktop Service Company, Humboldt
Determann Asphalt Paving, L.L.C., Camanche
Duinick Inc., Prinsburg, MN
Fort Dodge Asphalt Company, Fort Dodge
Gee Asphalt Systems, Inc., Cedar Rapids
General Asphalt Construction Company, Davenport
Grimes Asphalt & Paving Corp., Grimes
Hansen Asphalt, Inc., Iowa City
Heartland Asphalt, Inc., Mason City
Henningesen Construction, Inc., Atlantic
Illowa Investment, Inc., Blue Grass
Kluesner Construction, Inc., Farley
Knife River Midwest, L.L.C., Sioux City
Koss Construction Company, Topeka, KS
Manatt's, Inc., Brooklyn
Mathy Construction Company, Onalaska, WI
River City Paving, Dubuque
McCarthy Improvement Company, Davenport
Midstate Reclamation, Inc., Lakeville, MN
Norris Asphalt Paving Company, Ottumwa
Oldcastle Materials Group
Cessford Construction Company, LeGrand
Des Moines Asphalt & Paving Company, Des Moines
Omni Engineering, Omaha, NE
Tri-State Paving, Inc., Estherville
L. L. Pelling Company, Inc., North Liberty
Shamrock Construction Company, L.L.C., Coralville
Shipley Contracting Corp., Burlington
Sta-bilt Construction Co., Harlan
Western Engineering Company, Inc., Harlan
W.K. Construction Co., Middleton, WI

SUPPLIER MEMBERS

Bituminous Material & Supply Company, Inc., Des Moines
Flint Hills Resources, Dubuque
Jebro, Inc., Sioux City

AGGREGATE SUPPLIER MEMBERS

BMC Aggregates, L.C., Elk Run Heights
Concrete Materials Co., Sioux Falls, SD
L. G. Everist, Inc., Sioux Falls, SD
Great River Materials, L.L.C., Burlington
Hallett Materials, Des Moines
Kuhlman Construction Company, Colesburg

Martin Marietta Materials, Des Moines
Schildberg Construction Company, Greenfield
Wendling Quarries, DeWitt

ASSOCIATE MEMBERS

Accurate Test Systems, Inc., Richfield, MN
Accurate Test Systems, Inc., Richfield, MN
Advanced Drainage Systems, Stuart
Ahrold Fay Rosenberg, Inc., Des Moines
Akzo Nobel Surface Chemistry, Chicago, IL
Altorfer, Inc., Cedar Rapids
Antigo Construction, Inc., Antigo, WI
Astec Industries, Chattanooga, TN
Avello Bioenergy, Boone
Barnhill & Associates, West Des Moines
Big Iron On-line Auction, West Des Moines
James W. Bell Company, Inc., Cedar Rapids
Bituminous Insurance Company, West Des Moines
BOMAG Americas, Kewanee, IL
Bonnie's Barricades, Inc., Des Moines
Burroughs Consulting Group, Hiawatha
Central Service & Supply, Inc., Ankeny
Clarence Richard Company, Minnetonka, MN
Coleman-Moore Company, Des Moines
Construction & Aggregate Products, Des Moines
Construction Materials Testing, Des Moines
Custom Welding & Metal Fabricating, Inc., Waite Park, MN
Cylosoft, Inc., Ames
Dahl Trucking, Inc., Elmore, MN
Denco Highway Construction, Mingo
J.D. Donovan, Inc., Rockville, MN
Edwards Contracting Ltd., Hampton
Elite Flagging, Inc., Cedar Rapids
Flagger Pros USA, L.L.C., Ames
Fusion / Cryogenic Engineering, Cedar Rapids
Gencor Industries, Inc., Orlando, FL
Glendandy Marketing & Advertising, Ames
Hawkeye Consulting Service, Inc., Cedar Rapids
Heuss Printing, Inc., Ames
Holmes Murphy & Associates, West Des Moines
Housby / VOCON, Des Moines
Humboldt Manufacturing Company, Schiller Park, IL
Innoventor, St. Louis, MO
Iowa Parts, Inc., Cedar Rapids
Iowa Plains Signing, Slater
Iron Planet, West Des Moines
Jim Hawk Truck Trailers, Inc., Altoona

La Mair-Mulock-Condon Company, West Des Moines
Logan Contractor Supply, Urbandale
Manhole Adjustable Riser Company, Oskaloosa
MeadWestvaco Corporation, North Charleston, SC
Merchants Bonding Company, Des Moines
MetroWaste Authority, Des Moines
Mid-Iowa Enterprises, Inc., Ames
Midwest Tennis & Track, Denison
Modified Asphalt Solutions, Inc., West Des Moines
Ron Monson and Sons, Britt
Murphy Tractor & Equipment Company, Inc., Wichita, KS
Olson Brothers Sodding and Landscaping, Marion
QPR, Alpharetta, GA
Quality Striping, Inc., Des Moines
Quality Traffic Control, Inc., Des Moines
Quick Supply Company, Des Moines
R2R Recycling, L.L.C., West Des Moines
Road Machinery & Supplies, Des Moines
Road Science, Inver Grove Heights, MN
RoadSafe Traffic Safety, Inc., Des Moines
Roadtec, Inc., Chattanooga, TN
Sakai America, Inc., Adairsville, GA
Save Our Sewers, Inc., Cedar Rapids
Star Equipment, Ltd., Des Moines
S.T.A.T.E. Testing, L.L.C., East Dundee, IL
3M Company, Omaha, NE
Tarmac, Inc., Blue Springs, MO
Tennis Services of Iowa, Marion
Terex Roadbuilding, Cedar Rapids
Titan Machinery, Des Moines
Unique Paving Materials, Cleveland, OH
Valley Environmental Services, Newton
Walker Construction Company, Emporia, KS
Waste Commission of Scott County, Buffalo
Weiler, Knoxville
Wells Fargo Bank, Des Moines
Whitfield & Eddy, P.L.C., West Des Moines
Wirtgen America, Inc., Antioch, TN
XL Specialized Trailers, Inc., Manchester
Ziegler, Inc., Des Moines

CONSULTING ENGINEERS

Anderson-Bogert Engineers & Surveyors, Inc., Cedar Rapids
Fox Engineering Associates, Ames
Debra S. Haugen, LLC, Minneapolis, MN
IIW, P.C., Dubuque
Terracon, Cedar Rapids